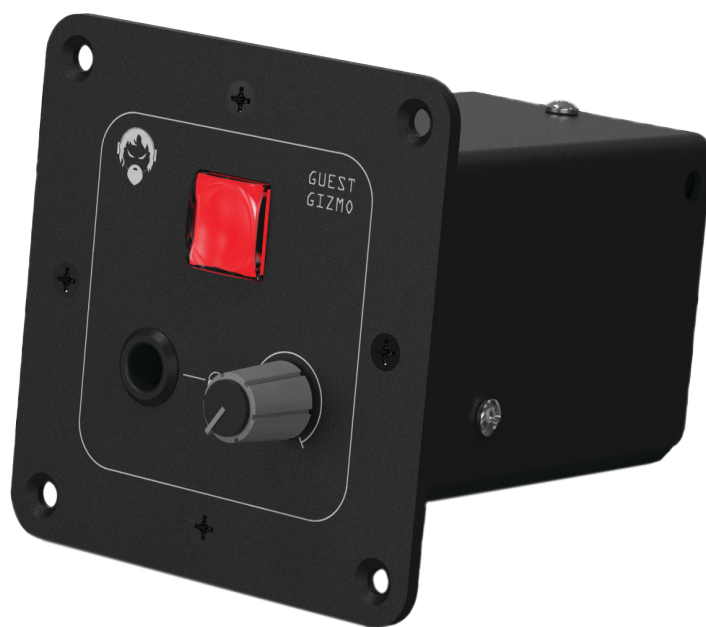


The cough drop

GUEST GIZMO



angryaudio.com

The cure for the common cough.

Guest Gizmo

Studio guests are only human. And humans cough. They cough and clear their throats and sniff and snort. Not the most pleasant experience for your listeners. If you tell your guests to turn their heads and cough, they might misunderstand. Besides, it really doesn't help that much.

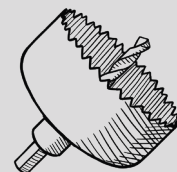
Cure this with the Guest Gizmo. It has a cough drop (ahem) button built right in. Your guest feels the need to make disgusting noises and pushes the button until the urge has passed. You'll want one at every guest microphone position. The cough button is a necessary tool.



Speaking of necessities, every guest needs headphones. Which is why the Guest Gizmo provides a stereo headphone amplifier with volume control. Your guest can adjust headphone levels to personal taste (that human thing again). And the Guest Gizmo amp has the power to drive just about anything, even those big cans so beloved in radio.

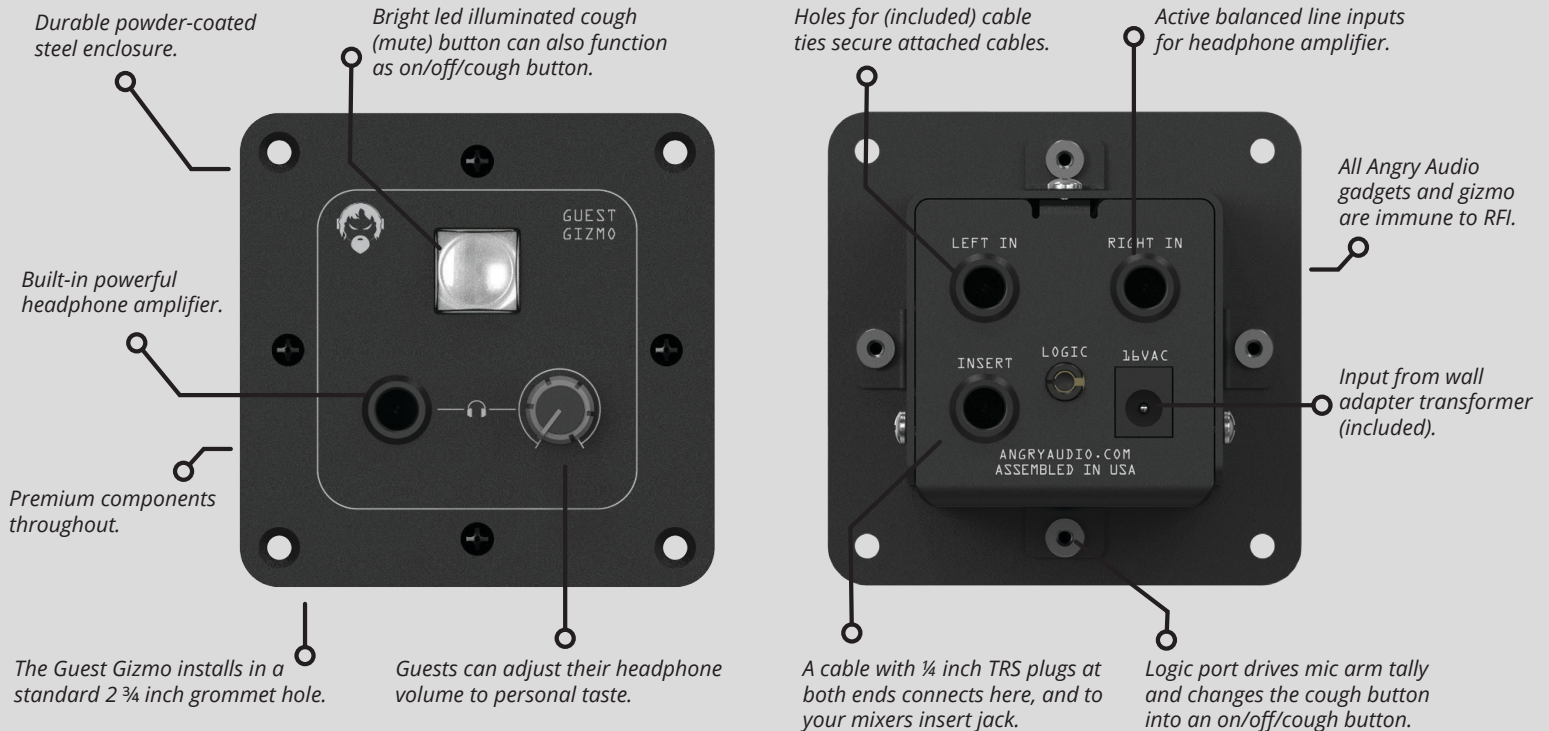
You know those cool new mic arms with the built-in LED tallies? They're all the rage. Problem is lighting them up. Guest Gizmo to the rescue again. Hook up your mic arm to the logic port and the button changes from cough to on/off/cough and drives the red light whenever the mic is hot. Cool?

Installing the Guest Gizmo in your studio furniture couldn't be easier. All you need is a 2 3/4 inch grommet hole. A quick trip to the hardware store for a hole saw and you're ready for business. No router required. Your studio gets a clean, custom appearance and you get all the credit. Well deserved, we say.



Guest Gizmo

The Guest Gizmo uses your mixer's microphone insert jack to provide the muting function. A cable with a ¼ inch TRS plug at both ends is all you need. The muting is done with a sealed relay with isolated gold contacts. Because these are dry contacts, you can even use the insert jack to drive muting logic on a broadcast console if you have one.



Specifications:

Headphone Amplifier

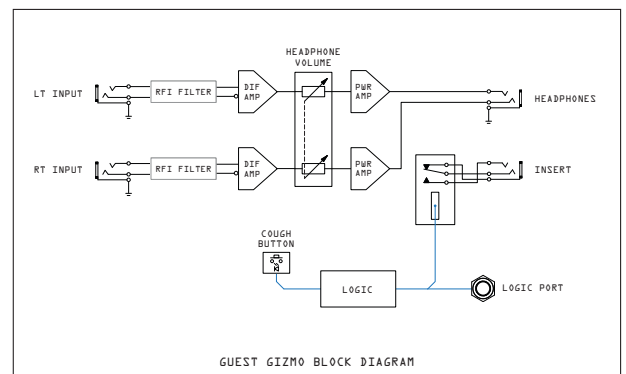
Nominal Input Level	+4dBu
Input Impedance	20kΩ Fully Balanced
Minimum Headphone Impedance	16Ω
Maximum Output	+18dBu
Output Impedance	10Ω
Frequency Response	±0.2dB (20Hz - 20kHz)
THD + N	≤0.008% (20Hz - 20kHz)
Noise	≤-90dBu (20Hz - 20kHz unweighted)
Maximum Power	550mW per channel at 75Ω

Power and Environmental

North American Version	115VAC 60Hz, NEMA 5-15P power plug
Export Versions	230VAC 50/60Hz, various plugs available
Power Consumption	3VA
Operating Temperature	0° to 40° C (32° to 104° F)
Storage Temperature	-20° to 45° C (-4° to 113° F)
Relative Humidity	0% to 90% non-condensing
Mounting hole diameter	2.75 inch

Product Weight & Dimensions

Shipping box	9in x 5in x 5in, 4 pounds
--------------	---------------------------



Part number: 991021 115VAC USA Power Plug
991021E 230VAC Europe Power Plug
991021A 230VAC Australia Power Plug
991021U 230VAC UK Power Plug

Box Includes:

Guest Gizmo
StudioHub Dual TRSM to RJ45 adapter
3.5mm to screw terminal adapter
Wall adapter power transformer



Balancing Gadgets

All three Balancing Gadgets feature an internal low-noise linear power supply, direct coupled transformerless analog circuitry and our exclusive input design that suppresses common mode noise. The result is the most sonically-transparent devices available. Never any buzz, hum, hiss or RFI.



Bluetooth Gadget

Bidirectional smartphone to PRO audio interface. Use your Bluetooth-equipped device for audio playback, phone calls, skype, etc. AAC and APTX audio codecs provide premium audio quality.



Talkshow Gadget

Adds broadcast features to audio mixers. Monitor speaker muting and volume control, pushbutton microphone control, on-air warning logic. All passive signal chain features sealed gold-contact relays.



Failsafe Gadget

Stereo silence sensor and backup audio switcher. Adjustable threshold and delay. Alarm logic port. Can also be used to switch when audio is active.



Distribution Gadget

2x4 stereo or 2x8 monaural analog audio distribution amplifier. Choose from IHF or PRO audio input. Each output pair can be stereo or mono sum.



Guest Gizmo

Stereo headphone amplifier, Cough (mute) button, tally lamp driver. Installs in desktop. High power headphone amplifier can drive high or low impedance headphones.



Mic Tally Gizmo

Driver for MIKA mic arms equipped with LED tally. Installs in desktop. Dual logic inputs to illuminate tally either red or white.



Headphone Gizmo

Premium stereo headphone amplifier with StudioHub RJ45 connectors for input and daisy-chain output. Innovative circuitry can drive high impedance or low impedance headphones with power to spare.

ANGRY AUDIO LLC

128 Holiday Court, Suite 118
Franklin TN 37067 USA

+1 (615) 763-3033
www.AngryAudio.com
answers@angryaudio.com

© Angry Audio LLC. All Rights Reserved.